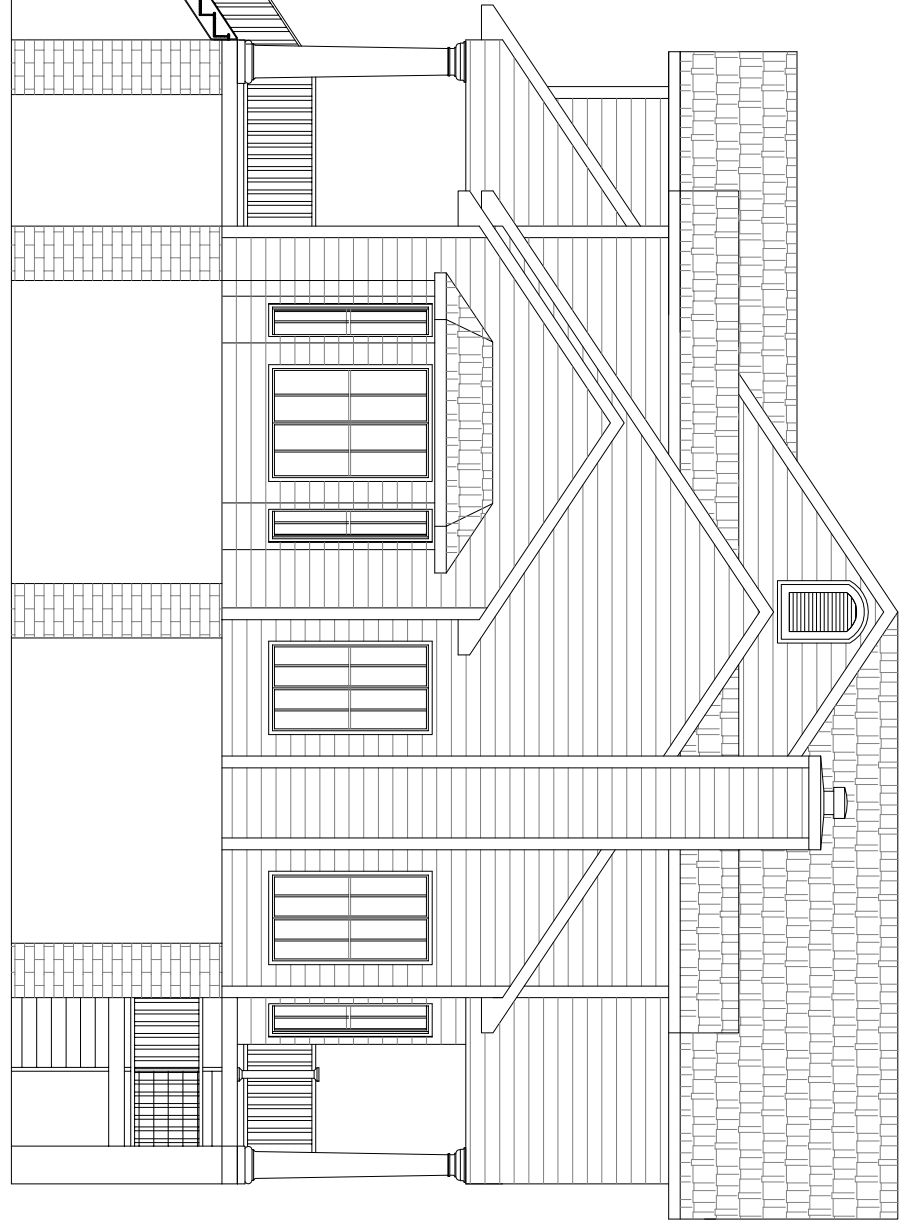
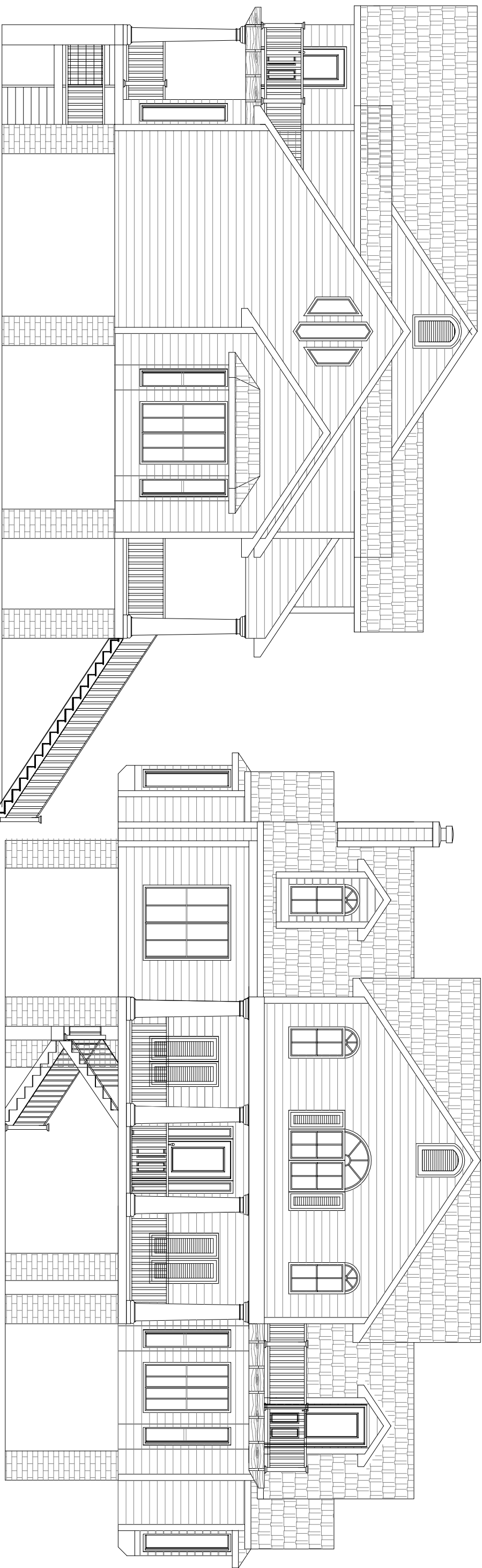


1 FRONT ELEVATION  
1/4"=1'-0"

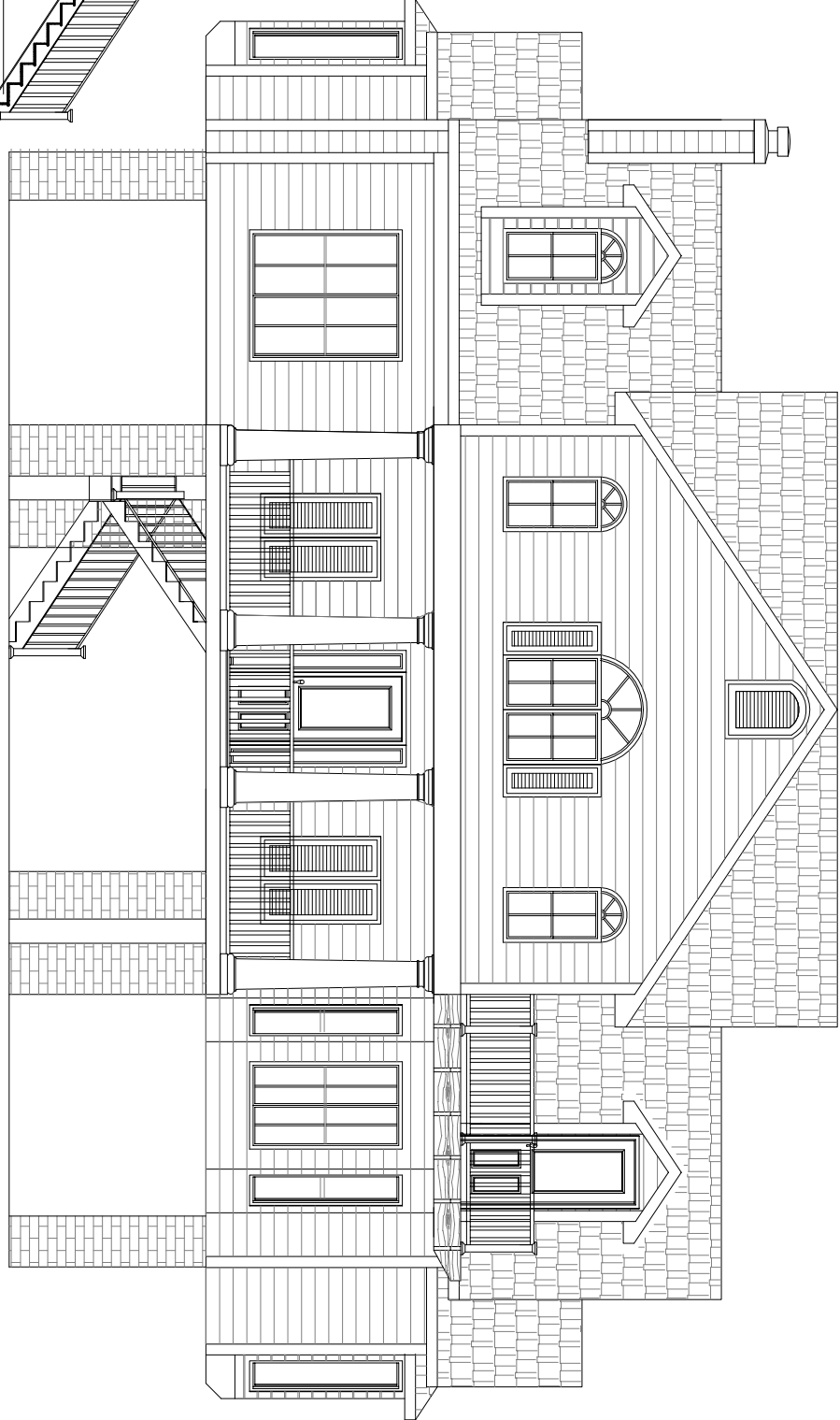


2 RIGHT SIDE ELEVATION  
1/4"=1'-0"

NOTE:  
ALL WORK MUST CONFORM  
TO APPLICABLE CODES  
AND ORDINANCES.



3 LEFT SIDE ELEVATION  
1/4"=1'-0"



4 REAR ELEVATION  
1/4"=1'-0"